



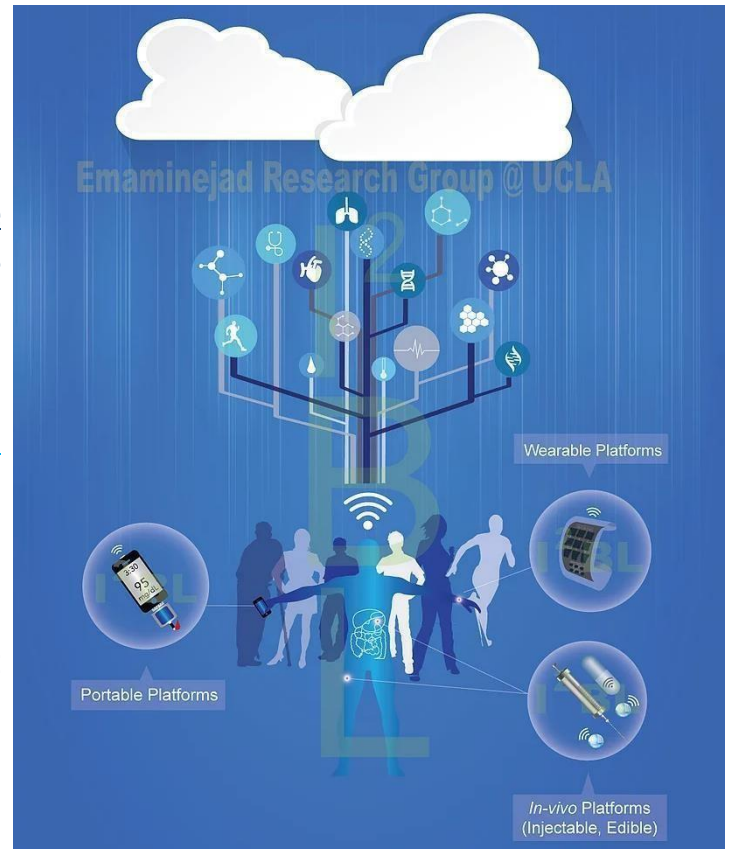
Emaminejad Research Group @ UCLA

Interconnected & Integrated Bioelectronics Lab

Undergraduate Research Opening *Wearable Devices for Biosensing*

We seek outstanding and motivated students who are interested in applying biochemical, mechanical and electrical techniques to develop the next generation of wearable biomonitoring platforms. Applicants are expected to work on 3D printing, biomedical device fabrication, testing, and characterization. Applicants must have a strong interest in working on interdisciplinary projects that will lead to real-world applications.

Our vision at [Interconnected & Integrated Bioelectronics Lab \(I²BL\)](#) is to develop an ecosystem of integrated physiological and environmental monitoring platforms to enable personalized and precision medicine. To this end, we utilize micro- and nanotechnologies to isolate, control, sense and target biological and chemical species in human samples and their surrounding environments. Additionally, we integrate our devices into electronic platforms with system-level functionalities to enable translational applications.



Requirements

Applicants must have relevant background **in at least one of the following** topics:

- 1) Microfluidic**
- 2) Biochemistry**
- 3) Materials science**
- 4) Mechanical modeling/simulation**
- Or 5) With strong enthusiasm and dedication**

How to apply?

Applications should be emailed to Prof. Emaminejad (emaminejad@ucla.edu) and should contain:

- 1) a resume**
- 2) a list and description of relevant design/photography projects.**