

Discover UCLA Engineering MAE Faculty Panel

Jeff Eldredge

*Professor
MAE Vice Chair for
Undergraduate
Programs*

Tim Fisher

*Professor
MAE Department Chair*

Elisa Franco

Associate Professor

Dennis Hong

Professor

Lihua Jin

*Assistant
Professor*

Ann Karagozian

Professor

Pirouz Kavehpour

Professor

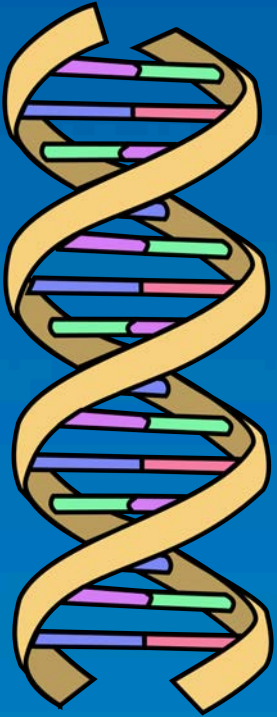
**Kunihiko (Sam)
Taira**

Associate Professor

Richard Wirz

Professor

Professor Elisa Franco

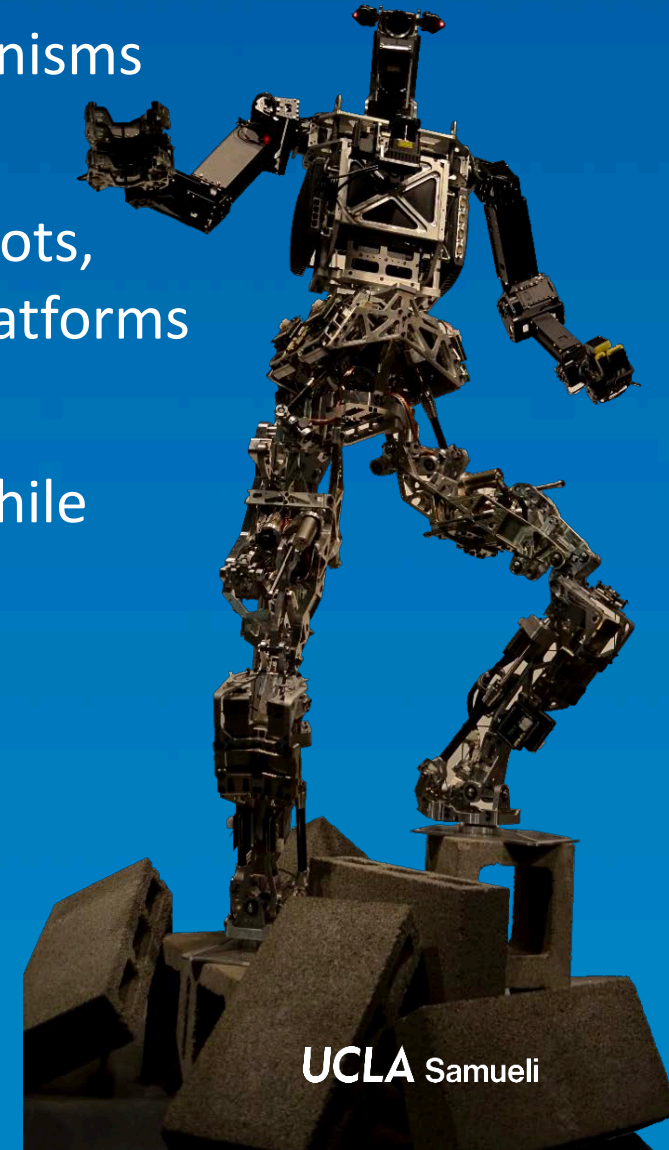


- I have been a Professor in MAE at UCLA for 1 year.
- My expertise is modeling biological systems to understand how they self-organize.
- My lab studies how to build biological self-organizing materials using DNA and RNA.
- UCLA is an amazing community: faculty and students are among the brightest in the nation. Your classes will include timely topics and research that address current technology needs and challenges.



Professor Dennis Hong

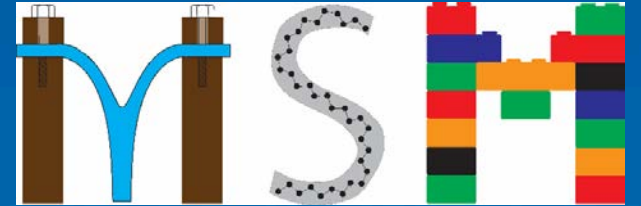
- Professor in MAE and Director of RoMeLa: Robotics & Mechanisms Laboratory
- My area of expertise is in Robotics (Humanoids & Bipedal Robots, Robot Locomotion & Manipulation, Soft Actuators, Robotic Platforms & Mechanisms)
- I believe in: Hands-on, Minds-on learning! Saving the world while having fun!



UCLA Samueli

Professor Lihua Jin

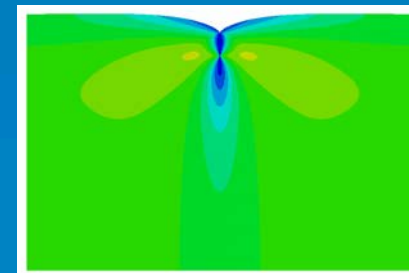
- I have been a Professor in MAE at UCLA since 2016.
- My area of expertise is mechanics of soft materials.
- I think UCLA Eng is a place integrates science and technology. MAE is a major in which you will learn from math to physics, from computer coding to hand-on fabrication, from fundamentals to real-world applications.



Functional soft materials



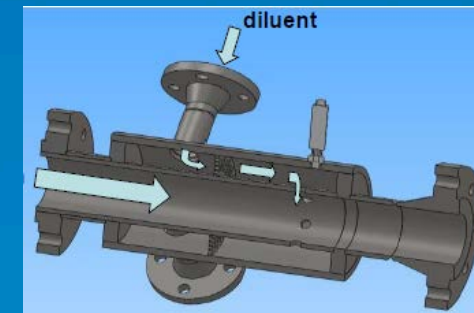
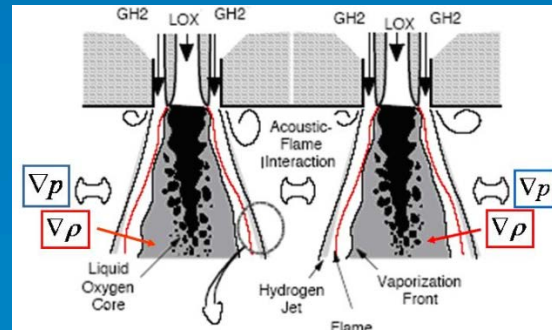
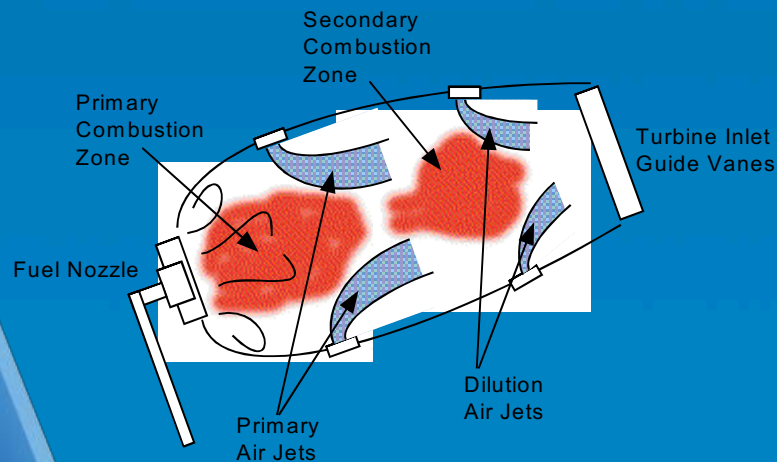
Soft robotics and stretchable electronics



Mechanics of soft materials

Professor Ann Karagozian

- I have been a Professor in MAE at UCLA for nearly 38 years
- My area of expertise is in Fluid Dynamics and Combustion, which is the study of how fluid flow and flames behave, especially in rocket and aircraft engines
- UCLA is an amazing place, filled with bright and energetic people who care about learning and helping others and discovering new insights into the world around them.



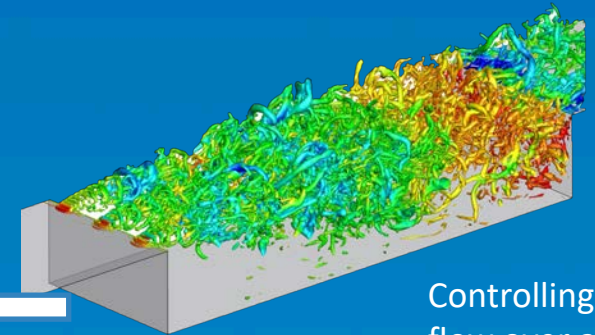
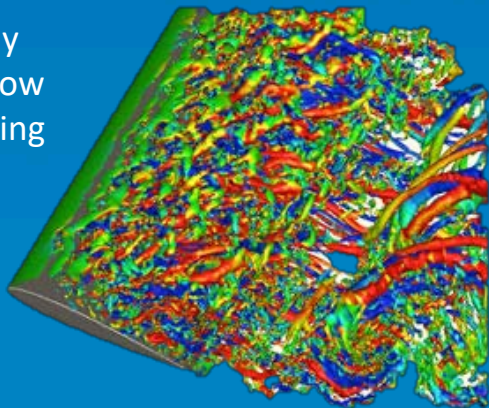
Professor Pirouz Kavehpour

- I have been a Professor in MAE at UCLA for nearly 17 years
- My area of expertise is in Fluid Dynamics, Heat Transfer, Energy and Bioengineering all of which related to each other via science that is called “Transport Phenomena”
- My research students work on experiential investigation of
 - Science of 3D Printing
 - Why don’t penguins freeze!
 - Energy storage systems (like batteries) for future
 - Chronic Traumatic Encephalopathy (CTE) or what happens when you get hit in the head often.
- UCLA is a multi-cultural, multi-disciplinary place where you find challenges you are looking for, provided Professors who will mentor you and make sure you achieve your dreams.

Professor Sam Taira

- I have been a faculty member for 9 years. I joined UCLA last year.
- My area of expertise is in Computational Fluid Dynamics. We use supercomputers to understand unsteady aerodynamics. We also work on controlling flows for air, marine, and ground vehicles.
- UCLA is a very lively university with diverse students and faculty members! You will meet some of the brightest folks in the world that will impact your life and career.

Massively stalled flow over a wing



Controlling flow over an aircraft cavity

Professor Richard Wirz

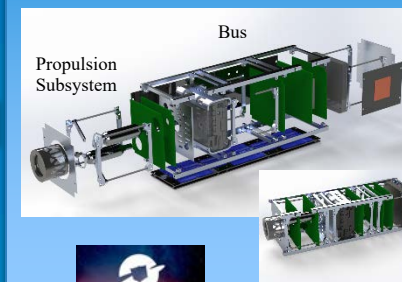
- I have been a UCLA faculty member for 12 years. I am also an advisor for the Air Force and NASA.
- My area of expertise is in the new and emerging field of plasma thrusters and plasma-medicine. We use plasma experiments and models to understand plasma behavior and design/build better devices
- UCLA is in the heart of the Aerospace World. UCLA Students engage with this vibrant community through classes, internships, and our many successful UCLA alum.



UCLA



URSa - UCLA's Interplanetary CubeSat
Designed by UCLA Undergrads



bruinspace.com

Discover UCLA Engineering MAE Faculty Panel

Jeff Eldredge

*Professor
MAE Vice Chair for
Undergraduate
Programs*

Tim Fisher

*Professor
MAE Department Chair*

Elisa Franco

Associate Professor

Dennis Hong

Professor

Lihua Jin

*Assistant
Professor*

Ann Karagozian

Professor

Pirouz Kavehpour

Professor

**Kunihiko (Sam)
Taira**

Associate Professor

Richard Wirz

Professor